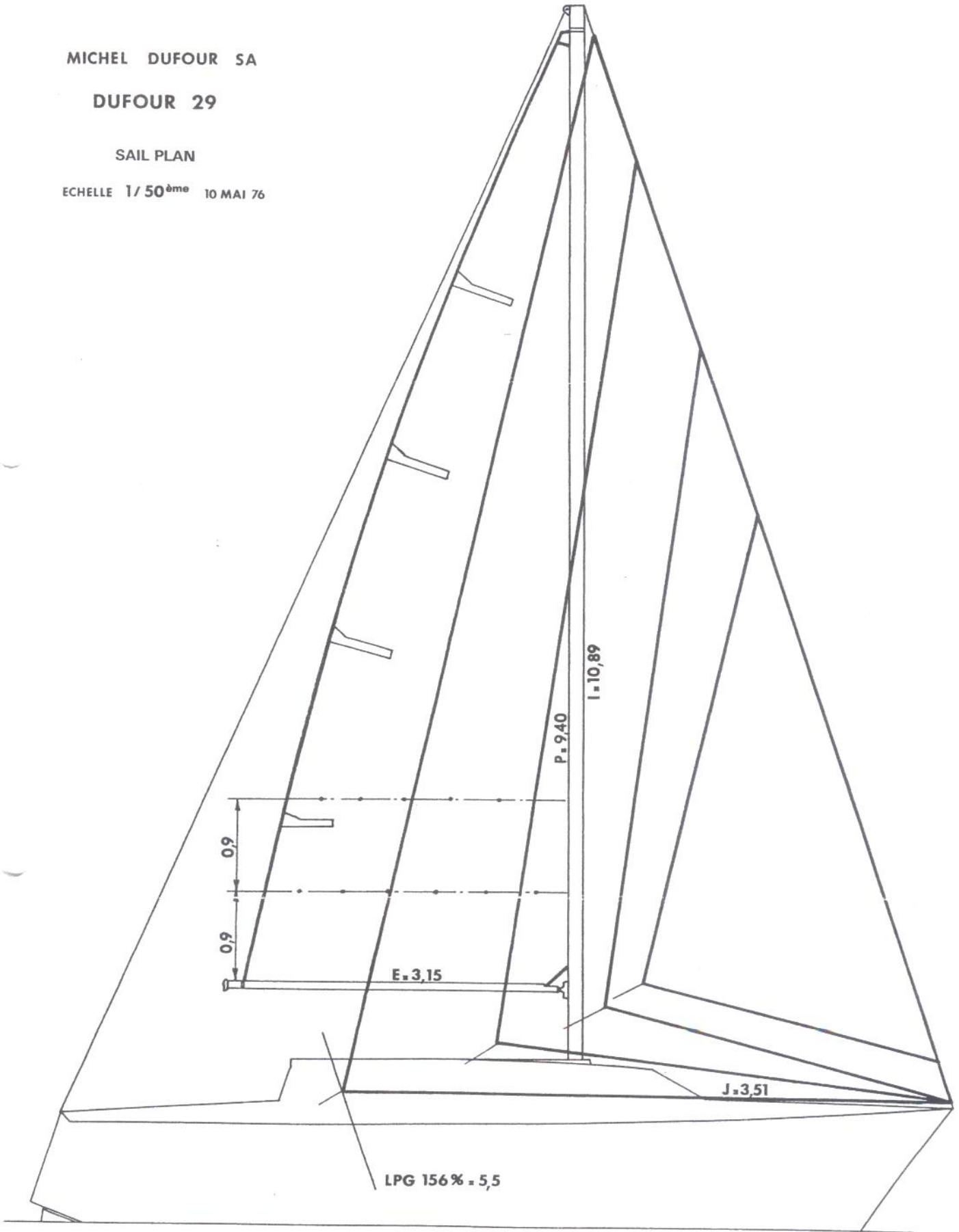


MICHEL DUFOUR SA

DUFOUR 29

SAIL PLAN

ECHELLE 1/50<sup>ème</sup> 10 MAI 76



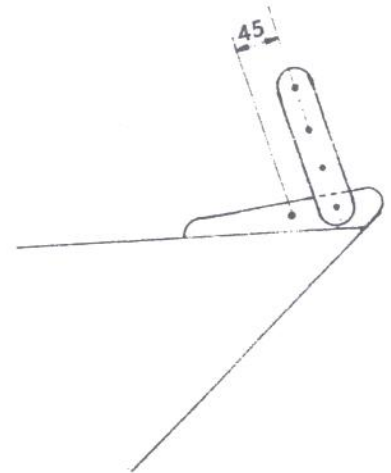
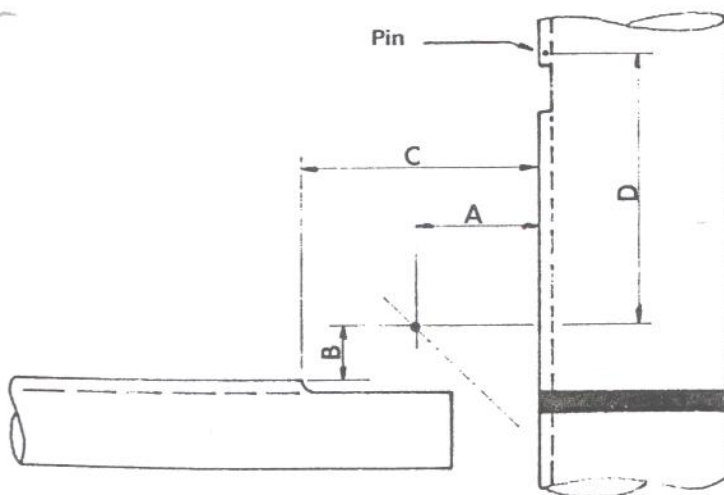
JC = 3,66

Measurements are theoretical

NAME	LUFF <i>Loef</i>	FOOT	LEECH <i>Lij</i>	SURFACE	MATERIAL	
MAINSAIL	9,40	3,15		16,5	Dacron 6oz5	
MEDIUM GENOA	11,05	5,86 <i>Approx.</i>	10,60	30,5	" 5oz	LPG 5,5
JIB N°1 <i>Fok 1</i>	9,76	4,40	8,75	19,2	" 6oz5	
JIB N°2 <i>Fok 2</i>	7,80	3,46	6,5	11,1	Teryl. 6oz5	
STORM JIB <i>Stormfok</i>	5,64	2,92	4,72	7	" 6oz5	
LIGHT GENOA	11,05	5,86 <i>Approx.</i>	10,60	30,5	Dacron 4oz <sup>3</sup> or	LPG 5,5
HEAVY GENOA	10,95	5,26 <i>Approx.</i>	10,40	27,2	" 6oz5	LPG 4,94
REACHER	11,05	6,46	9,45	30,5	" 3oz5	LPG 5,5
SWEDISH MAINSAIL	7,7	2,85		11	Teryl. 6oz5	
SPINNAKER	10,91	6,59	10,91	64,6	Nylon 52 gr. <sup>38</sup> to	

### NOTES

- 1 - Dimensions are in meters and millimeters. Weights are in oz (42 gr.) to the sq.m.
- 2 - Measurements indicated are the maximum within which the sails must remain while sailing under normal conditions. The sailmaker should take stretching of his material into consideration.
- 3 - Width of the head-board, length of the battens and position of the highest batten must be in accordance with IOR rules.
- 4 - The jib n° 1, the jib n° 2 and storm jib have upper pendants making their total luff 11,05 m.
- 5 - The storm jib has a lower pendant of 0,40 m.
- 6 - The genoas are set outside the main shrouds.
- 7 - The weight is given as an indication it eventually has to be modified by the sailmaker depending on the choice of the materials.
- 8 - For spinnaker measurements refer to the rating specifications.
- 9 - The spinnaker head-board will have a swivel.
- 10 - The reacher luff is on a cable and the tack has a cunningham hole.
- 11 - The Swedish mainsail has a reefing line at 1,50 m.



	A	B	C	D
Quick reefing boom	60	25	210	340
Roller reefing boom				

\*

(Elvström mast)